



When to Form and Register a Committee

Terms to Know

Committee—§ 130.011, RSMo

Accepts contributions or makes expenditures to influence the action of voters for or against candidates and/or ballot measures or to pay a campaign debt. There are six types of committees:

1. **Candidate Committees:** formed by a single candidate for office in a specific election.
2. **Continuing Committee (PAC):** formed to remain in existence beyond any one election or issue, not directed by a candidate.
3. **Debt Service Committee:** candidate committee converted to retire committee debt.
4. **Exploratory Committee:** Formed to receive or spend money to determine if an individual will seek public office.
5. **Political Party Committee:** Formed as a committee of a political party.
6. **Campaign Committee:** Formed to support or oppose ballot measures or judicial retention.

Contribution—§ 130.011, RSMo

Money, services, or other valued item received or given for the purpose of supporting or opposing candidates or ballot measures.

Expenditure—§ 130.011, RSMo

A payment, advance, conveyance, deposit, donation, or contribution of money or anything of value for the purpose of supporting or opposing candidates or ballot measures. Expenditures should be reported at the time they are either made or incurred.

Non-Committee—§ 130.047.1, RSMo

An individual or entity not defined as a committee (not accepting contributions) but who spends \$500 or more of their own money to support or oppose candidates or ballot measures must file a *Non-Committee Expenditure Report*.

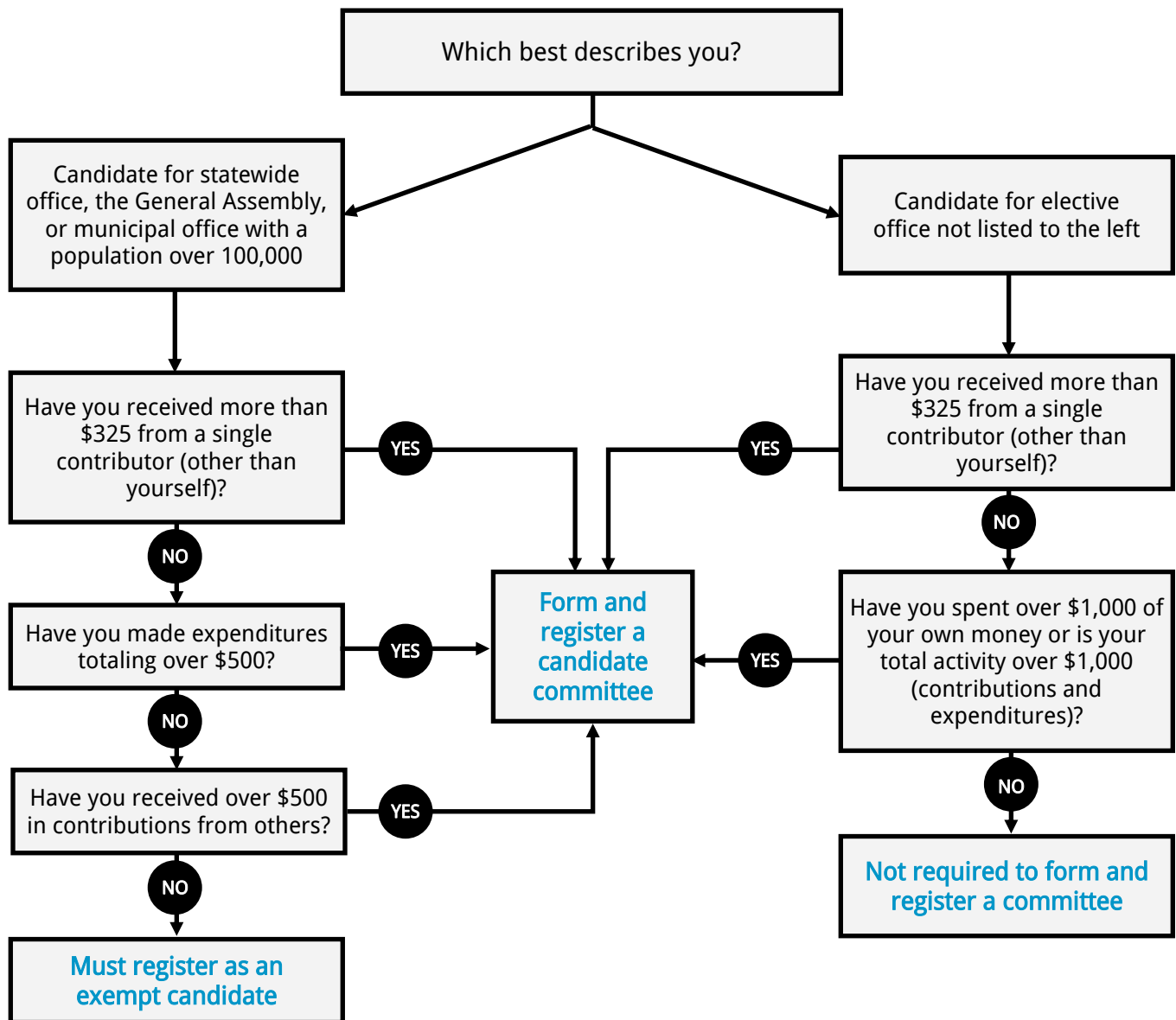


MEC

MISSOURI
ETHICS
COMMISSION

When to Form and Register a Committee: Candidates for Public Office

Candidates for public office should ask themselves the following questions to determine if they need to form and register a committee. Once you reach the thresholds below, must form a committee and submit a *Statement of Committee Organization* with the MEC within 20 days of forming or before your first report would be due.

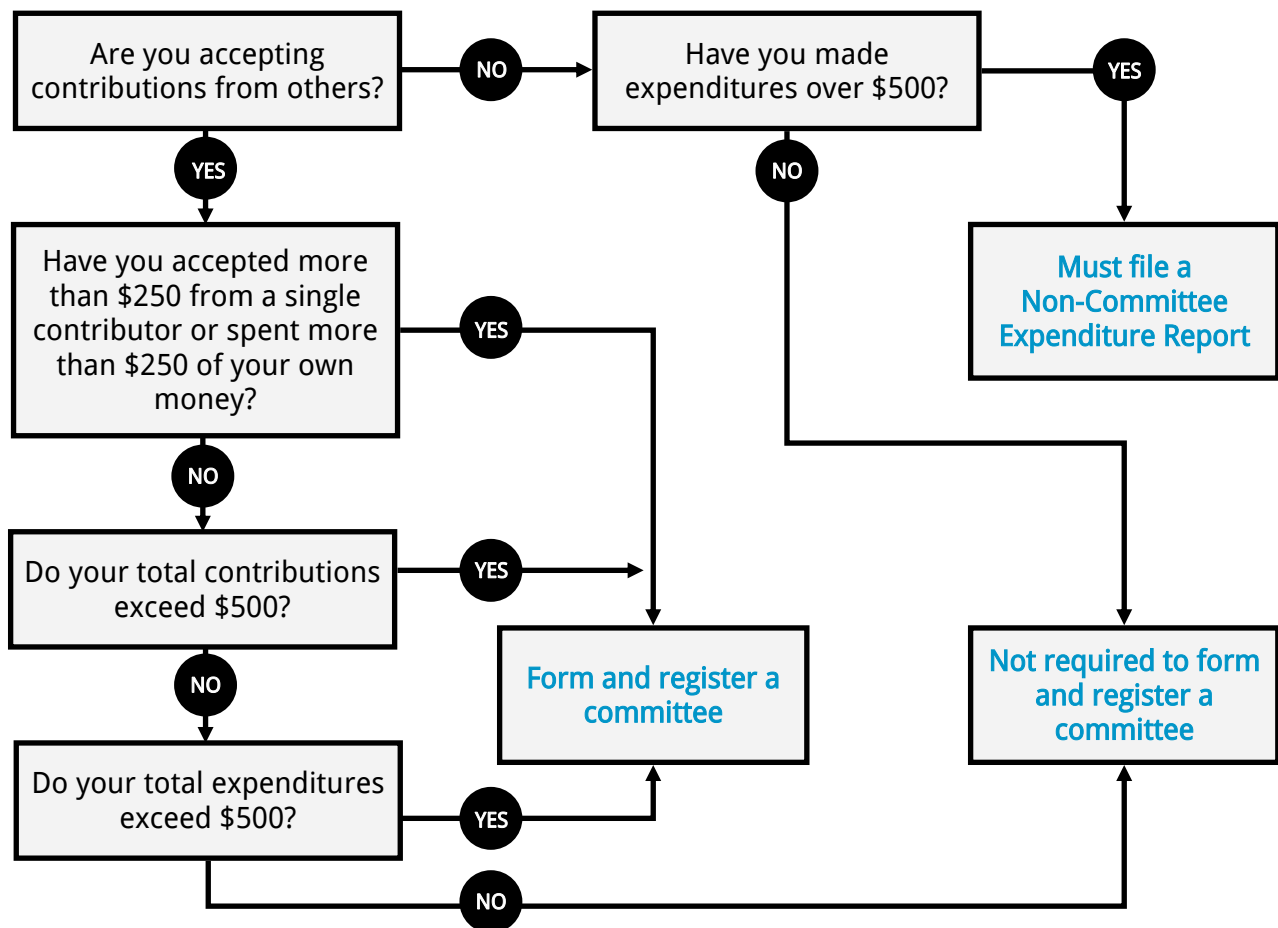


MEC

MISSOURI
ETHICS
COMMISSION

When to Form and Register a Committee: Anyone other than a candidate

Anyone other than a candidate should ask themselves the following questions to determine if they need to form and register a committee. Once you reach the thresholds below, form a committee and submit a *Statement of Committee Organization* with the MEC within 20 days of forming or before your first report would be due.



Related Resources:

- [Campaign Finance Frequently Asked Questions](#)
- [Treasurer's Guide to Campaign Finance](#)
- [Committee Checklist](#)
- [Statement of Committee Organization](#)
- [Campaign Finance E-Filing YouTube Tutorials](#)
- [Chapter 130, RSMo](#)



MEC

MISSOURI
ETHICS
COMMISSION